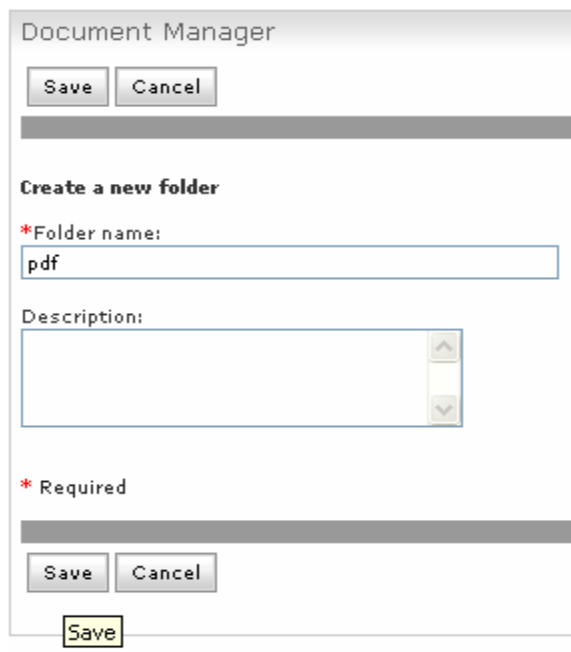
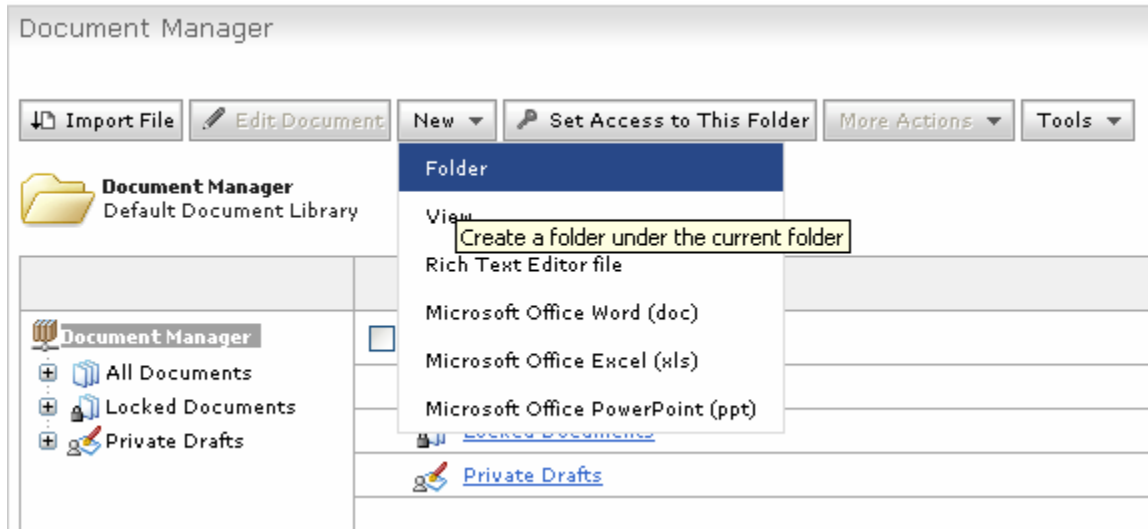


INTEGRATE PDM WITH WCM


1. Create a folder and import a document in PDM.

1.1 Create a folder in document manager and import a pdf or image file in to it. And click Publish.



The screenshot shows the 'Create a new folder' dialog box. It has a title bar 'Document Manager' and buttons for 'Save' and 'Cancel'. Below the title bar, there is a section titled 'Create a new folder'. The first field is '*Folder name:' with the text 'pdf' entered. Below it is a 'Description:' field with a text area and up/down arrows. At the bottom, there is a '* Required' section with a text area and buttons for 'Save' and 'Cancel'. A 'Save' button is also visible at the very bottom of the dialog.

Document Manager

 Upload a new document into the current folder

<ul style="list-style-type: none"> Document Manager All Documents Locked Documents Private Drafts pdf 	<input type="checkbox"/> Name ^
--	---

Import document

Click Browse to import a file from your computer. When you have

* File:

My Documents\My Completed Downloads\Sample.pdf

Title:

Sample

Description:

Language:


English

* Required

Your changes will be immediately visible to others

1.2 Select the folder and click Folder Actions > Set Access To This Folder in order to assign Anonymous Portal Users access to the folder.

Document Manager

 pdf

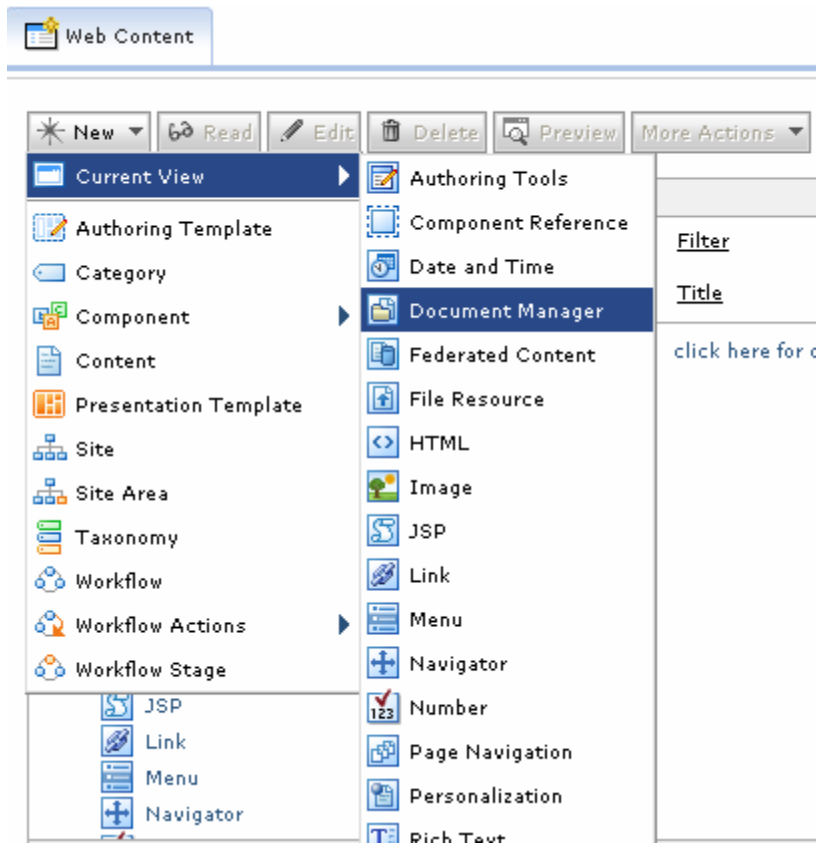
Manage the access control of the current folder

<ul style="list-style-type: none"> Document Manager All Documents Locked Documents Private Drafts pdf 	<input type="checkbox"/> Name ^ <input type="checkbox"/> Sample
--	--

2. Create a Document Manager Component in WCM.

2.1 Navigate to Launch > Web Content > We Content Management > Components > Document Manager.

2.2 Click New > Content View > Document Manager.



2.3 Enter name for the component and click search to import the pdf file from PDM.

Close Save Save... Preview

Identification

* Name: pdfDoc

Display title: Refer PDM doc

Description:

Type: Document Manager

Library: carquest

Authors: ishtiaque

Select Authors

Owners: ishtiaque

Select Owners

Document Manager Element

Path: /contentRoot/icm:libraries/pdf/Sample.pdf Search Preview Details Clear

Version: None Lock Refresh

Library: /contentRoot/icm:libraries

Title: Sample

Description: None

2.4 Assign Anonymous Portal User access to the PDM component and save it.

Access

Effective

Read: ishtiaque

Edit: ishtiaque

Delete: ishtiaque

User Defined

Read: None

Grant Read Access

Edit: None

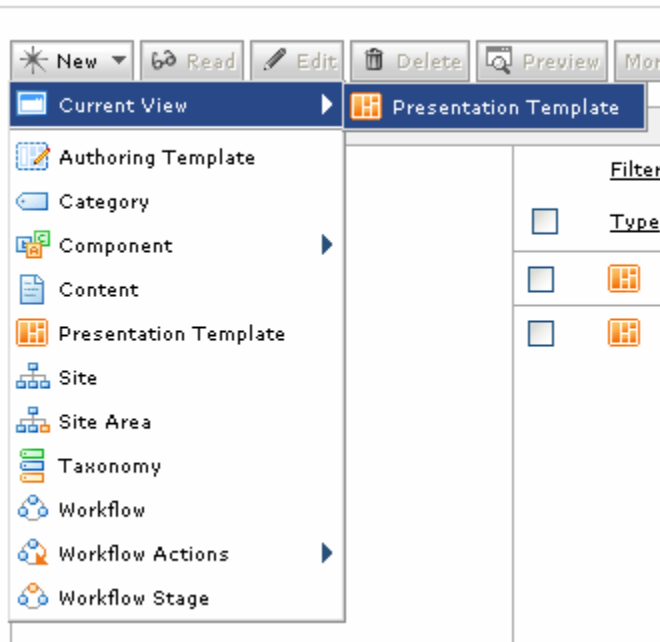
Grant Edit Access

Delete: ishtiaque

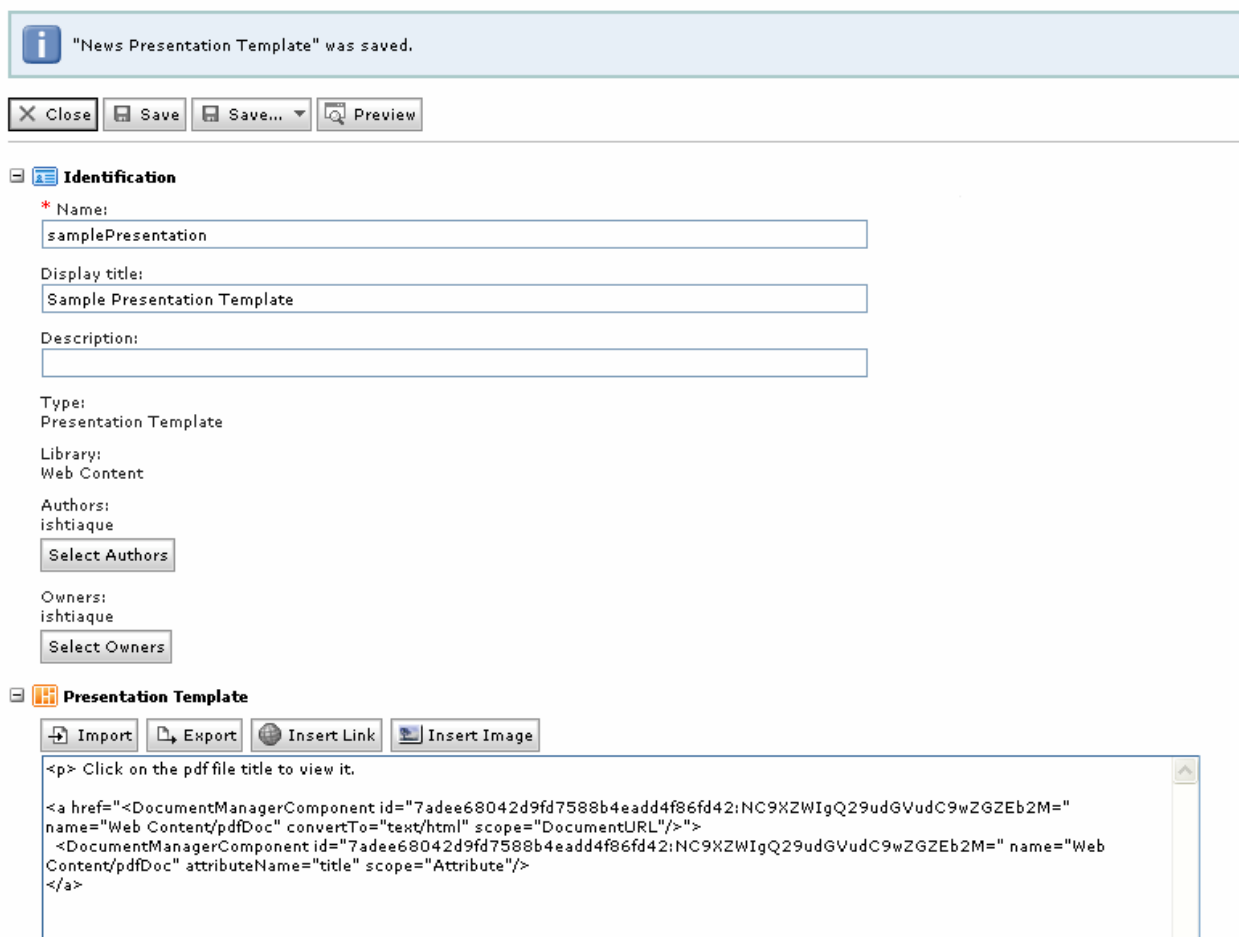
Grant Delete Access

3. Reference PDM component in a presentation template

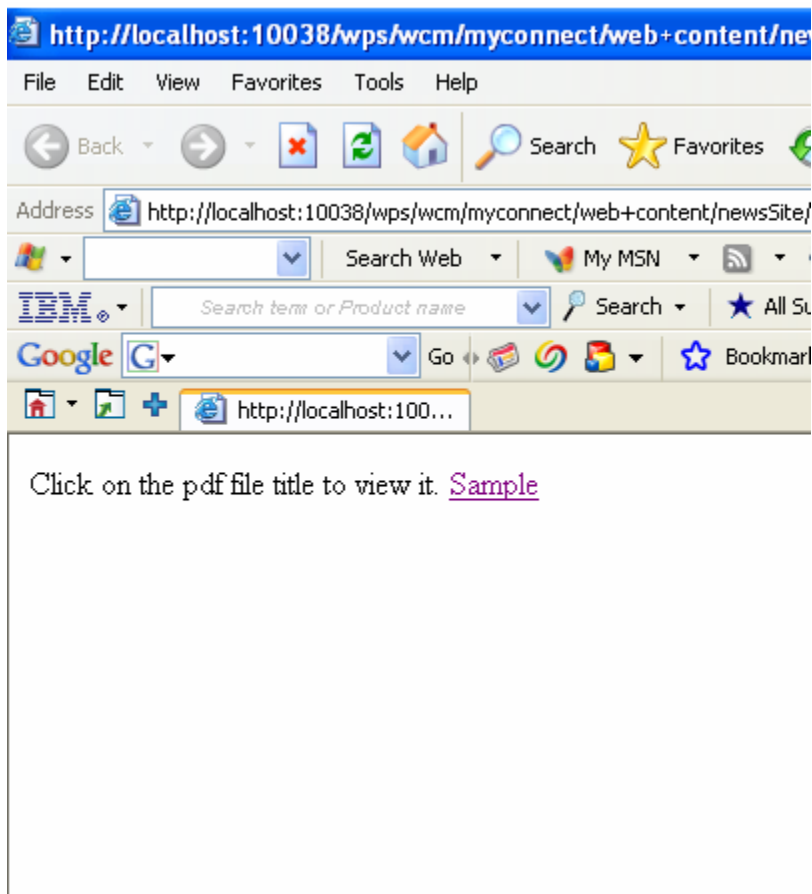
3.1 Navigate to Presentation Templates and click New > Content View > Presentation Template.



3.2 Configure the template as follows:



3.3 Preview the template to view it.



THE END



© Copyright IBM Corporation 2010
IBM Global Services
Route 100
Somers, NY 10589
U.S.A.
Produced in the United States of America
08-10
All Rights Reserved

IBM, the IBM logo, ibm.com, Lotus®, Rational®, Tivoli®, DB2® and WebSphere® are trademarks or registered trademarks of International Business Machines Corporation in the United States, other countries, or both. If these and other IBM trademarked terms are marked on their first occurrence in this information with a trademark symbol (® or ™), these symbols indicate U.S. registered or common law trademarks owned by IBM at the time this information was published. Such trademarks may also be registered or common law trademarks in other countries. A current list of IBM trademarks is available on the Web at "Copyright and trademark information" at ibm.com/legal/copytrade.shtml Other company, product and service names may be trademarks or service marks of others. The information contained in this documentation is provided for informational purposes only. While efforts were made to verify the completeness and accuracy of the information contained in this documentation, it is provided "as is" without warranty of any kind, express or implied. In addition, this information is based on IBM's current product plans and strategy, which are subject to change by IBM without notice. IBM shall not be responsible for any damages arising out of the use of, or otherwise related to, this documentation or any other documentation. Nothing contained in this documentation is intended to, nor shall have the effect of, creating any warranties or representations from IBM (or its suppliers or licensors), or altering the terms and conditions of the applicable license agreement governing the use of IBM software. This document illustrates how one organization uses IBM products. Many factors have contributed to the results and benefits described; IBM does not guarantee comparable results elsewhere.