

## Web servers and WebSphere Portal

By default IBM® WebSphere® Portal uses the internal HTTP transport within IBM WebSphere Application Server to handle requests. However, because WebSphere Application Server also supports the use of an external Web server, you can access WebSphere Portal from your Web server.

You can use a local Web server on the same machine as WebSphere Portal, or you can use a remote Web server on a different machine. A remote Web server is typical for a production environment or other high-traffic configuration.

To enable communication between the Web server and WebSphere Application Server, a Web server plug-in is required. The Web server plug-in determines whether a request is handled by the Web server or by the application server. The plug-in can be installed into a Web server that is located either on the same machine as WebSphere Application Server or on a separate machine from the WebSphere Application Server. The Web server plug-in uses an XML configuration file (plugin-cfg.xml) containing settings that describe how to handle and pass on requests to the WebSphere Application Server made accessible through the plug-in.

In the WebSphere Application Server administrative console, the Web server is represented as a specific server type, and you can view or modify all of the configuration properties used in the plugin-cfg.xml file for the Web server plug-in from the administrative console. WebSphere Portal supports the following Web servers:

- Apache Server
- IBM HTTP Server (Supported versions 2.0.47.1, 6.0, 6.0.1, 6.0.2)
- Microsoft® Internet Information Server
- IBM Lotus® Domino®
- Sun Java System Web Server

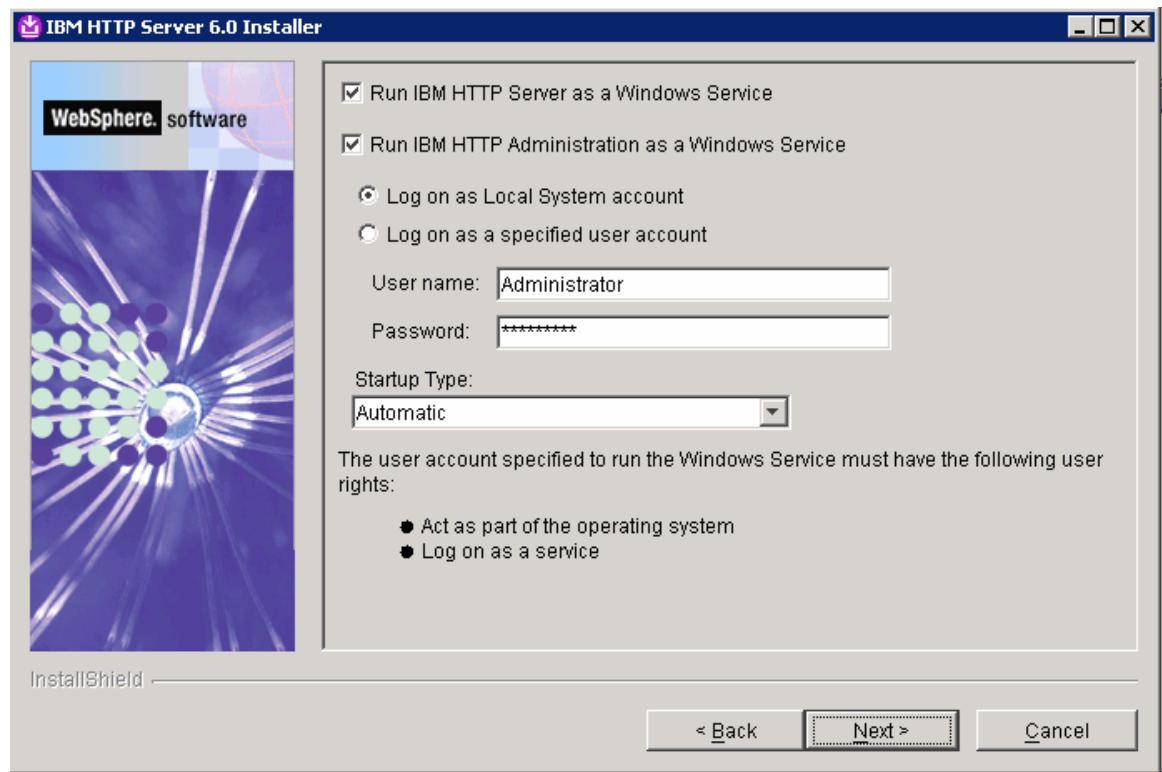
## Configure IBM HTTP Web Server with Web Sphere Portal

In order to configure IBM HTTP Server with WebSphere Portal Server proceed with following steps:

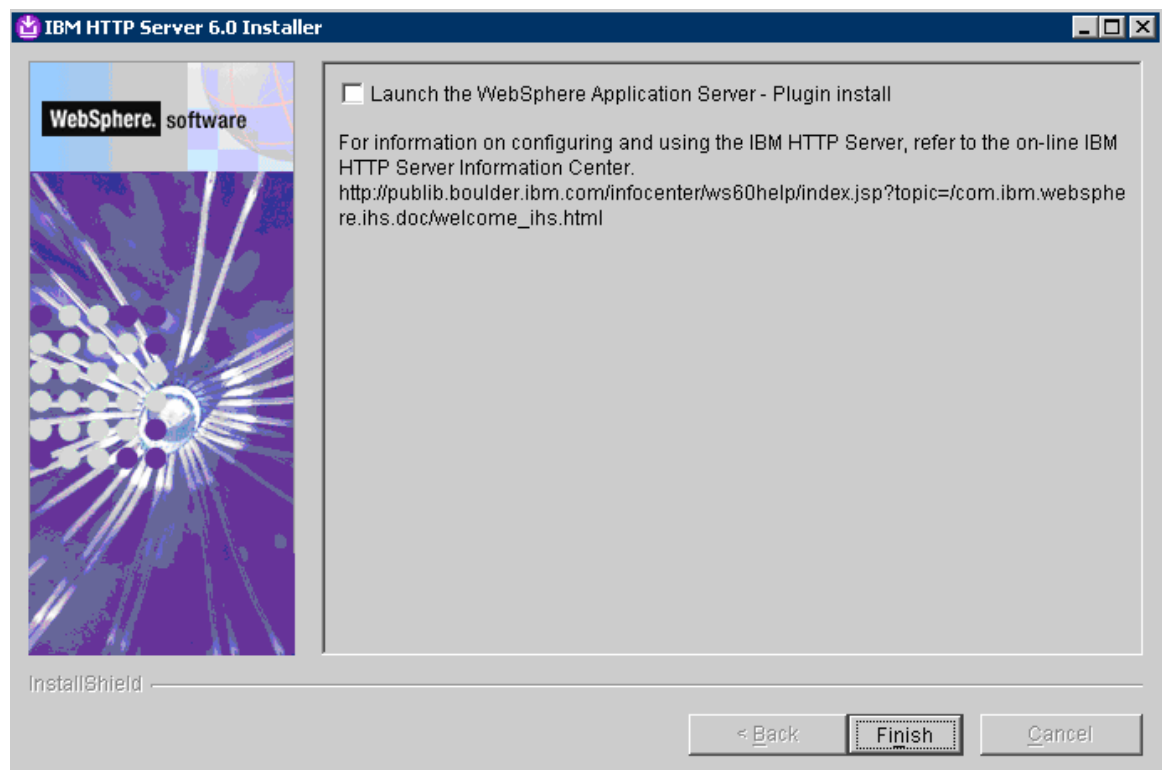
### 1. Install IBM HTTP Server v6.0.

- a. Run Install.exe file located at *portal installation source\W-2\windows\ia32\extras\IHS*
- b. Proceed with installation wizard and select appropriate options.

c. Type user name and password to configure HIS to run as windows service.

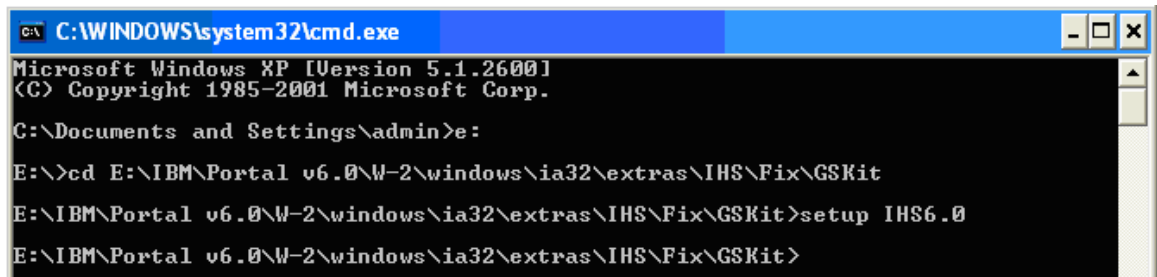


d. Uncheck WebSphere Application Server-Plugin install and click Finish button.



## 2. Install Fix for IHS:

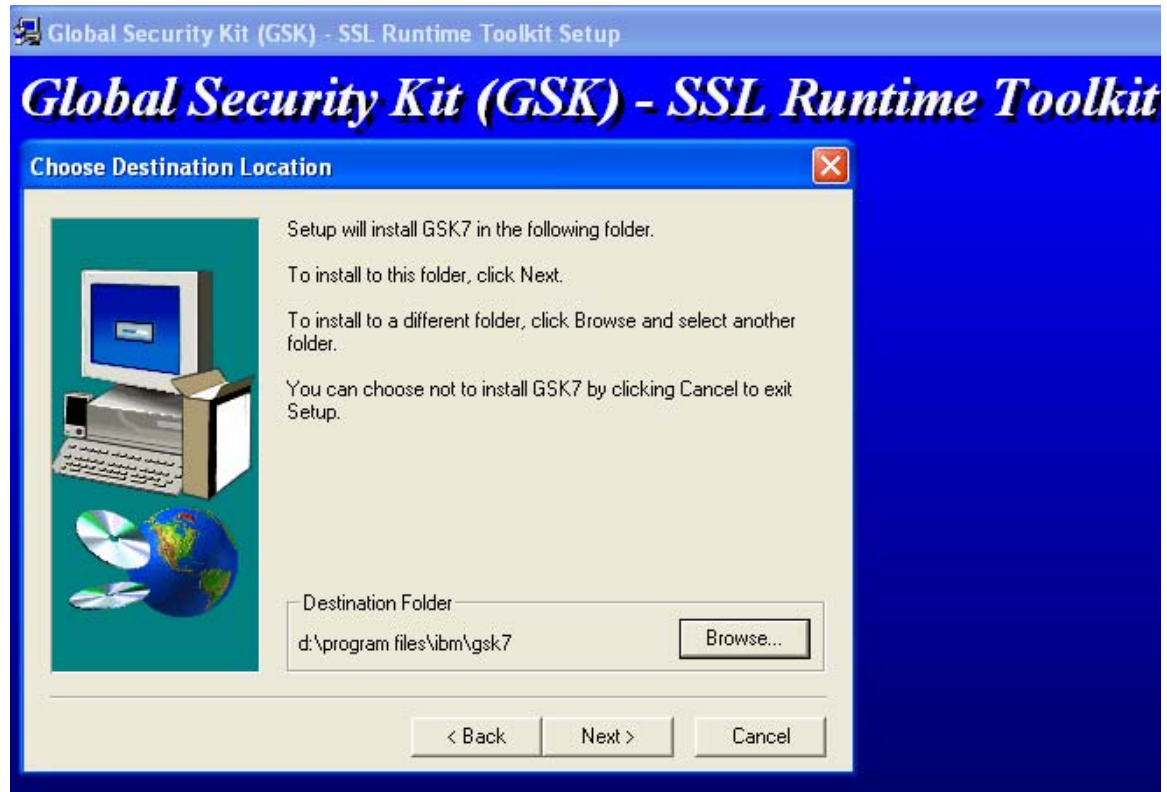
- a. Download PK13784 fix from [http://www-1.ibm.com/support/docview.wss?rs=177&context=SSEQTJ&q1=PK13784&uid=swg24011137&loc=en\\_US&cs=utf-8&lang=en](http://www-1.ibm.com/support/docview.wss?rs=177&context=SSEQTJ&q1=PK13784&uid=swg24011137&loc=en_US&cs=utf-8&lang=en).
- b. Create a directory and name it to GSKit, unpack the fix files in to it. Where GSK stands for *Global Security Kit*.
- d. Open command prompt and change directory to GSKit.
- e. Run this command setup IHSxxxxx.  
Where xxxxx is the installed version of IHS (either 1.3.28, 2.0.47, or 6.0). Example:  
"setup IHS1.3.28"



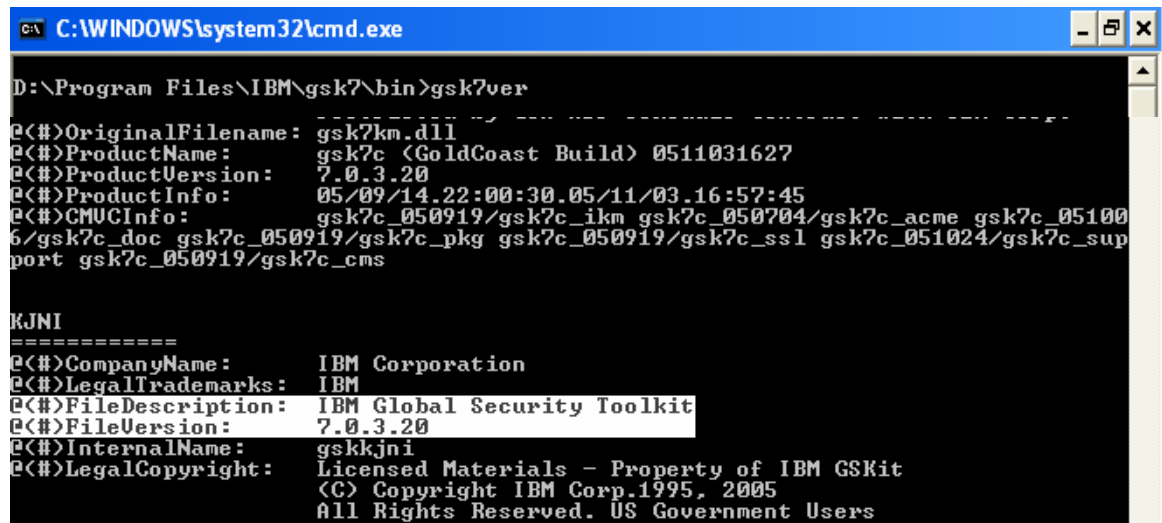
```
C:\WINDOWS\system32\cmd.exe
Microsoft Windows XP [Version 5.1.2600]
(C) Copyright 1985-2001 Microsoft Corp.

C:\Documents and Settings\admin>e:
E:\>cd E:\IBM\Portal v6.0\W-2\windows\ia32\extras\IHS\Fix\GSKit
E:\IBM\Portal v6.0\W-2\windows\ia32\extras\IHS\Fix\GSKit>setup IHS6.0
E:\IBM\Portal v6.0\W-2\windows\ia32\extras\IHS\Fix\GSKit>
```

- f. Browse to the folder where gsk will be installed.



- f. Change directory to *D:\Program Files\IBM\gsk7\bin*. Run the *gsk7ver* command to verify that the new version of GSKit is installed. This should report GSKit version 7.0.3.20.



```
C:\WINDOWS\system32\cmd.exe

D:\Program Files\IBM\gsk7\bin>gsk7ver

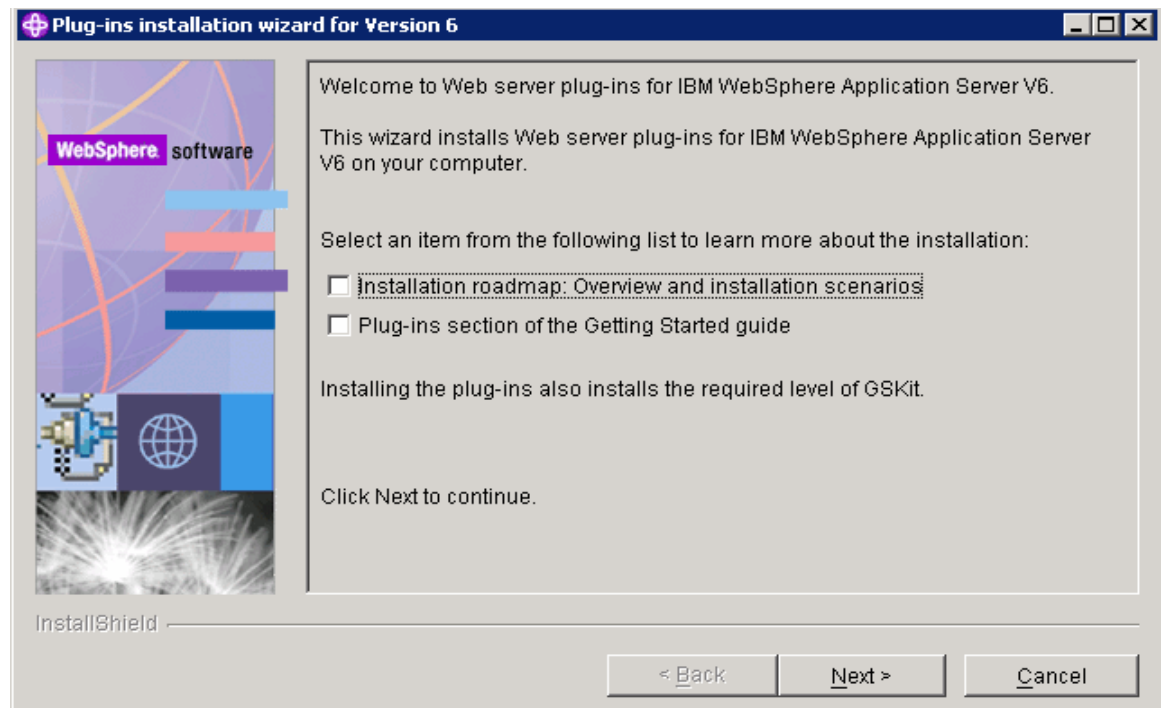
P(<#>)OriginalFilename: gsk7km.dll
P(<#>)ProductName: gsk7c (GoldCoast Build) 0511031627
P(<#>)ProductVersion: 7.0.3.20
P(<#>)ProductInfo: 05/09/14.22:00:30.05/11/03.16:57:45
P(<#>)CMVCInfo: gsk7c_050919/gsk7c_ikm gsk7c_050704/gsk7c_acme gsk7c_05100
6/gsk7c_doc gsk7c_050919/gsk7c_pkg gsk7c_050919/gsk7c_ssl gsk7c_051024/gsk7c_sup
port gsk7c_050919/gsk7c_cms

KJNI
=====
P(<#>)CompanyName: IBM Corporation
P(<#>)LegalTrademarks: IBM
P(<#>)FileDescription: IBM Global Security Toolkit
P(<#>)FileVersion: 7.0.3.20
P(<#>)InternalName: gskkjni
P(<#>)LegalCopyright: Licensed Materials - Property of IBM GSKit
(C) Copyright IBM Corp.1995, 2005
All Rights Reserved. US Government Users
```

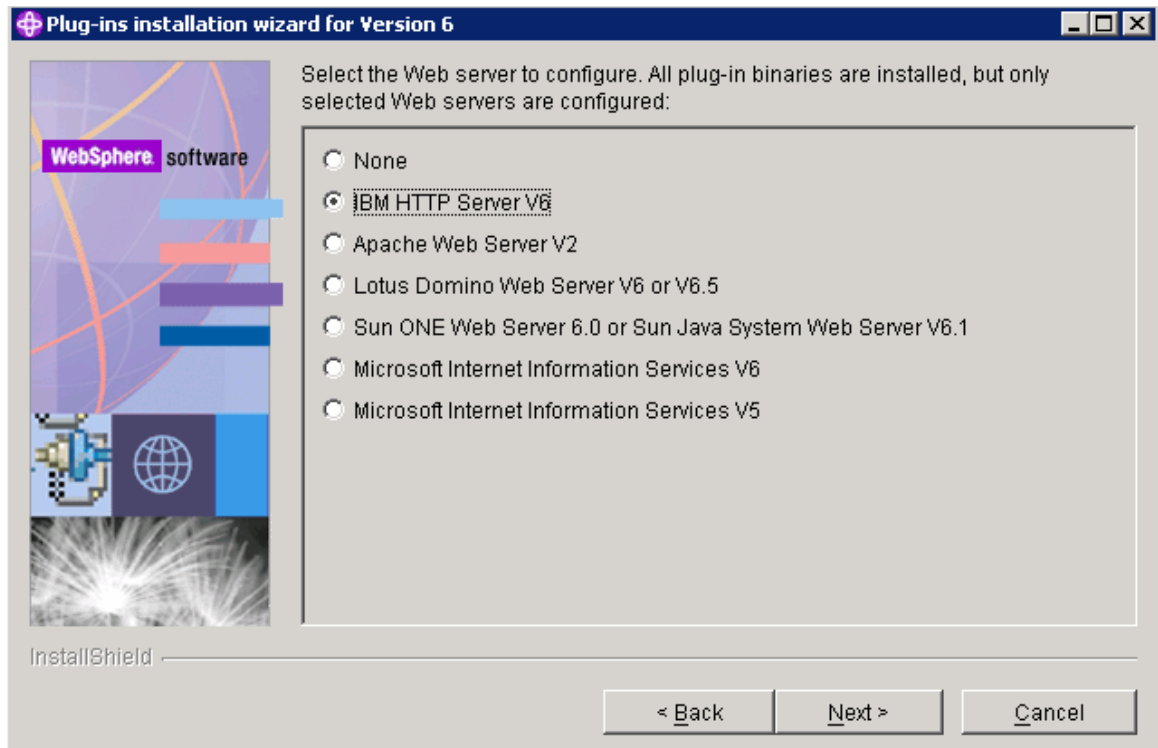
- h. Start IHS again.

### 3. Install Plugin:

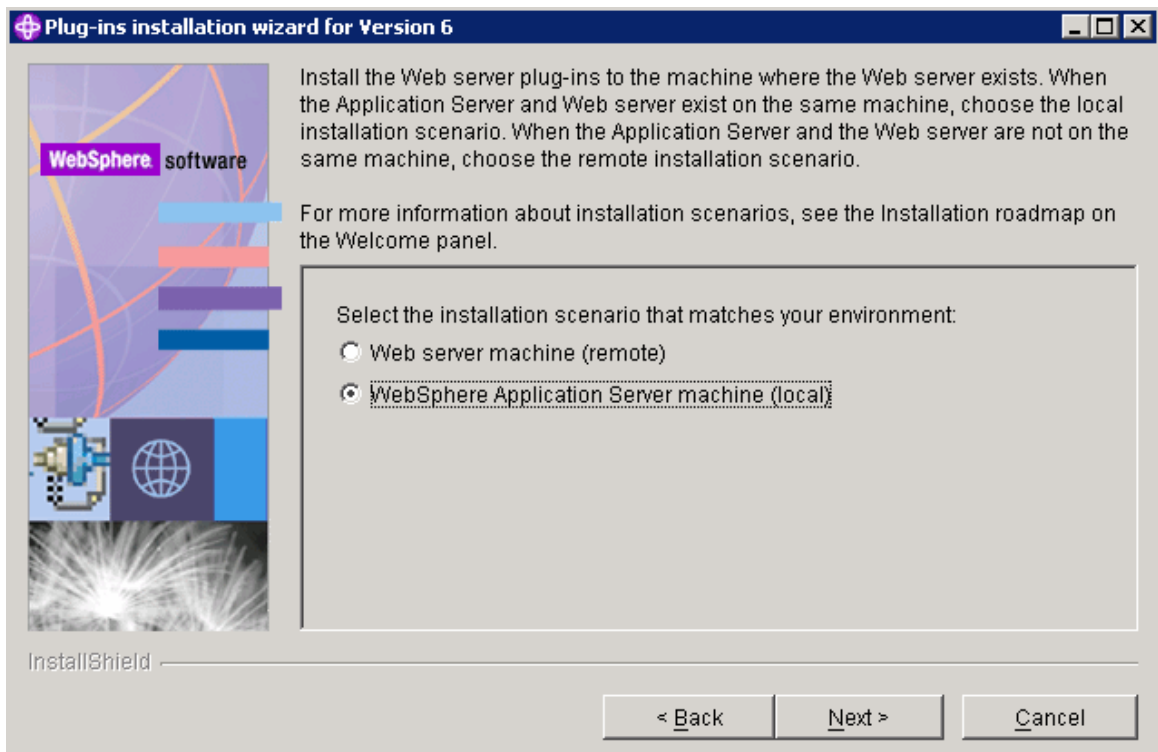
- a. Run *install.exe* file located at *portal installation source\W-2\windows\ia32\extras\IHS*.  
b. Uncheck the *Installation roadmap* checkbox and click Next button.



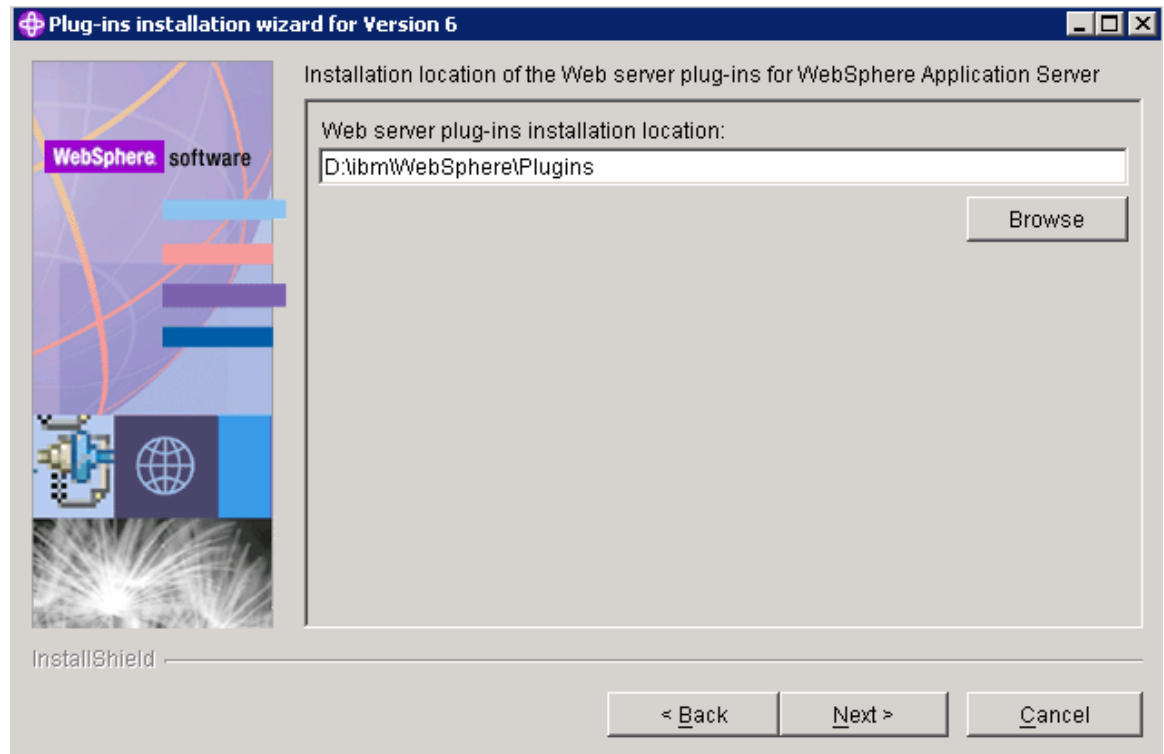
c. Select the Web Server to configure.



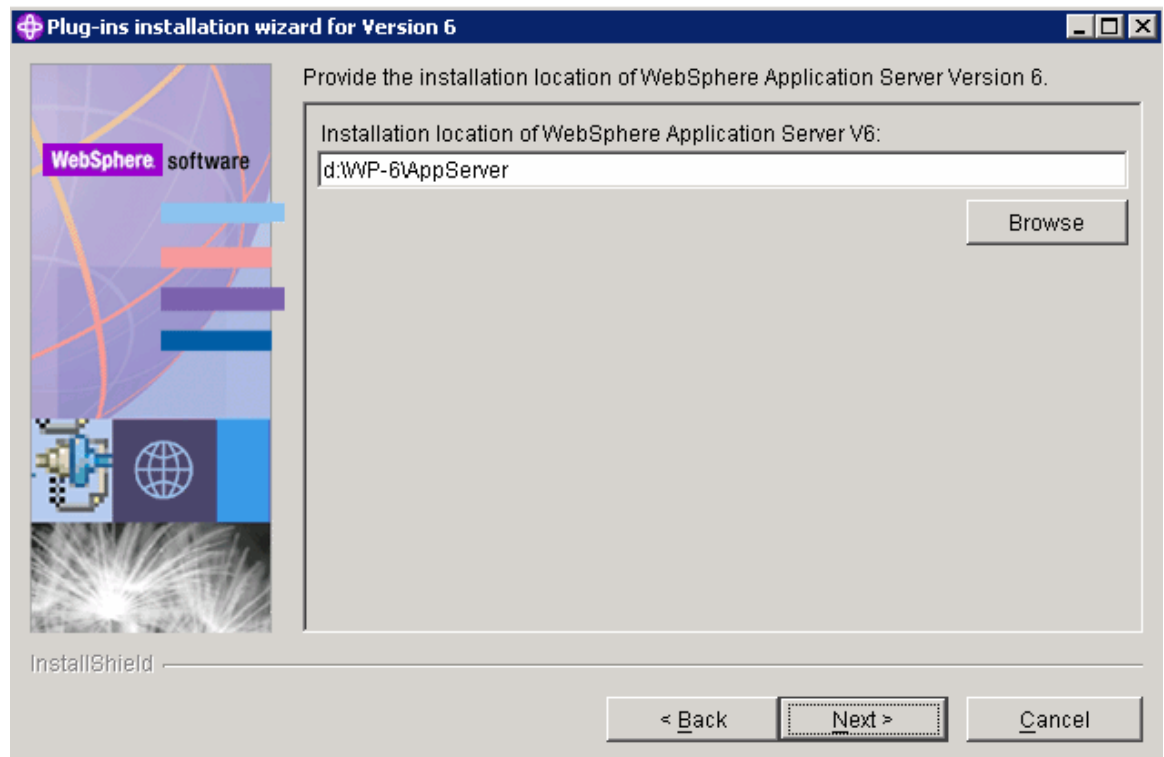
c. Specify either web server is installed on the same or remote machine.



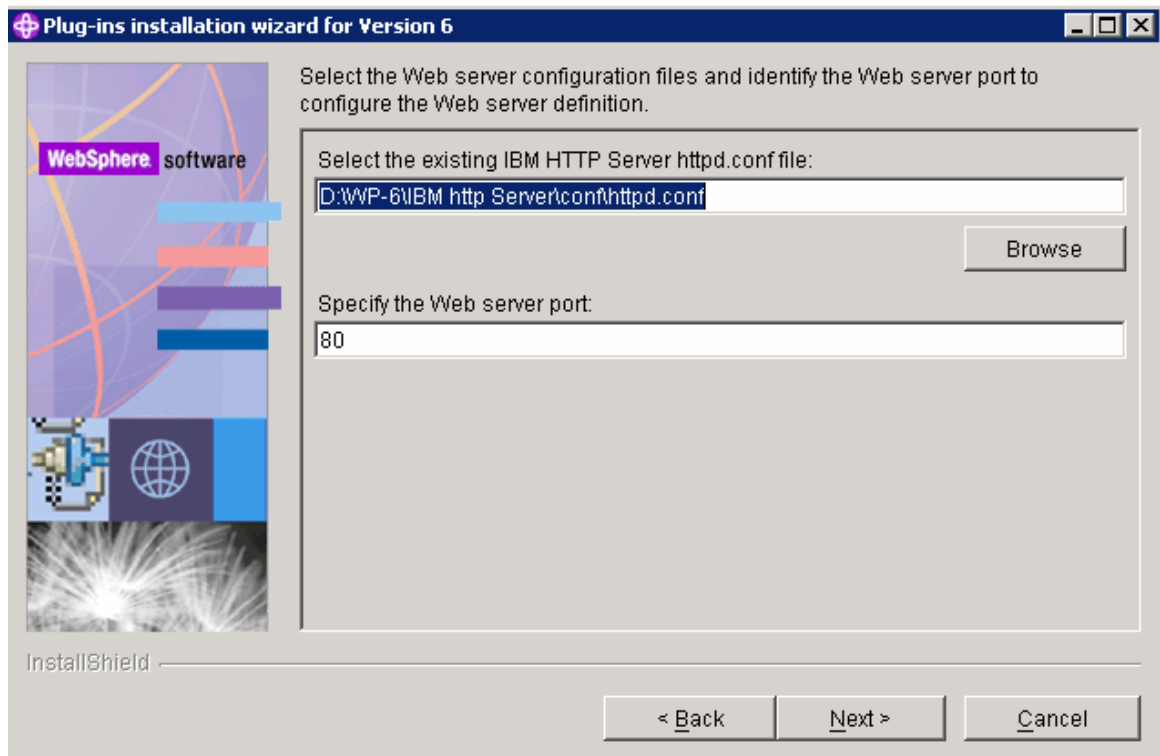
d. Browse the location where Plugin will be installed.



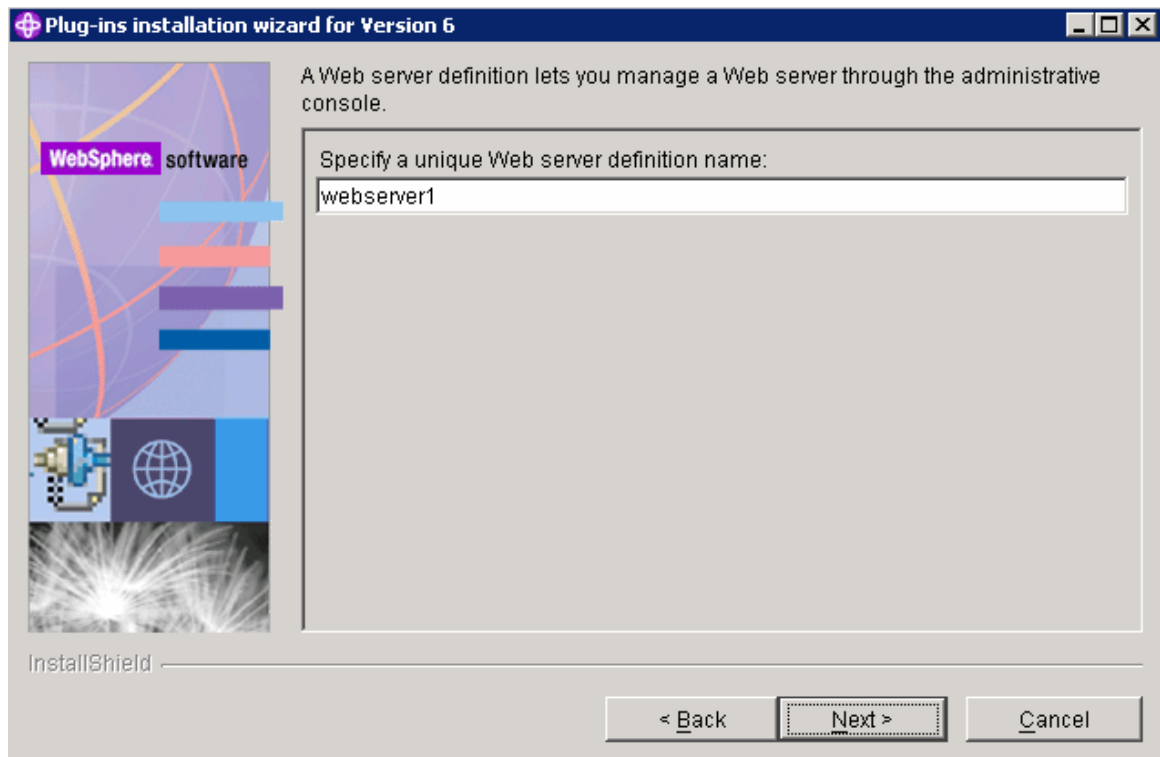
e. Specify location where Application Server is installed.



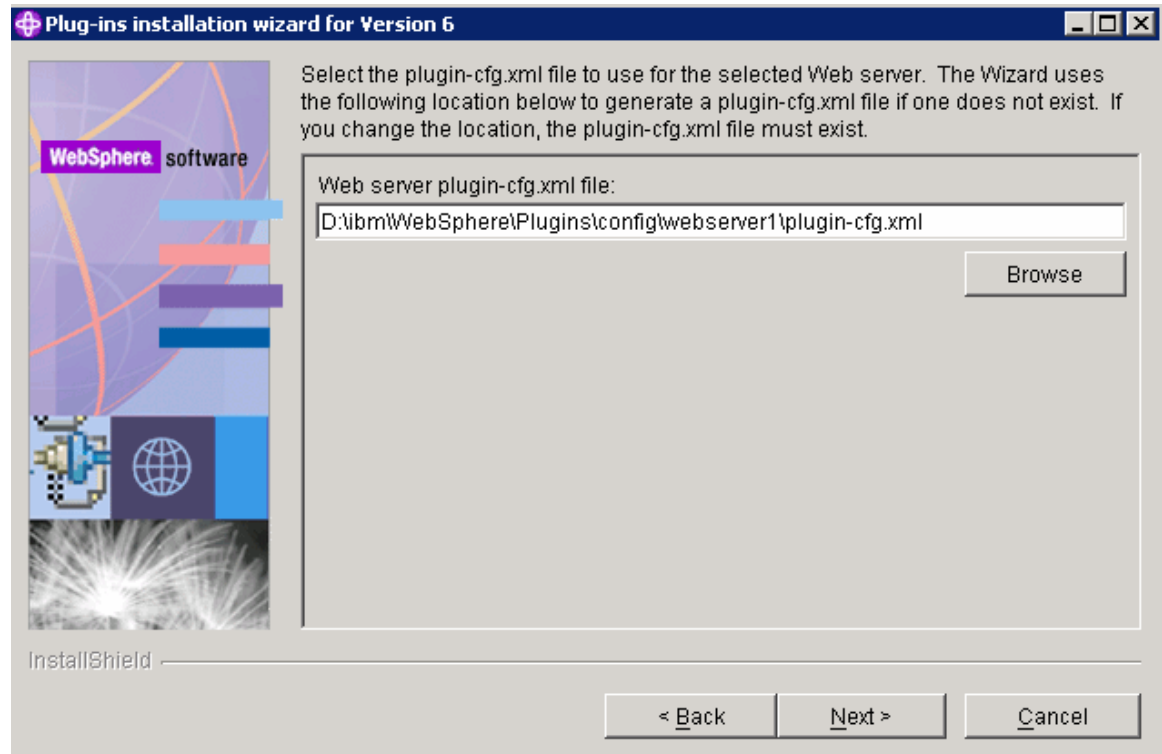
f. Select httpd.conf file of HIS, it's located at \HIS\conf directory.



g. Leave the default name for web server.



h. Leave the default path for plugin-cfg.xml file.



i. Proceed with the further installation option as appropriate.

#### 4. Verify Configuration.

- a. Start Websphere portal server.
- b. Type the url to access wps: <http://localhost/wps/portal>.

#### References:

[http://publib.boulder.ibm.com/infocenter/wpdoc/v6r0/index.jsp?topic=/com.ibm.wp.ent.doc/wpf/install\\_ihs\\_main.html](http://publib.boulder.ibm.com/infocenter/wpdoc/v6r0/index.jsp?topic=/com.ibm.wp.ent.doc/wpf/install_ihs_main.html)





© Copyright IBM Corporation 2010  
IBM Global Services  
Route 100  
Somers, NY 10589  
U.S.A.  
Produced in the United States of America  
08-10  
All Rights Reserved

IBM, the IBM logo, [ibm.com](http://ibm.com), Lotus®, Rational®, Tivoli®, DB2® and WebSphere® are trademarks or registered trademarks of International Business Machines Corporation in the United States, other countries, or both. If these and other IBM trademarked terms are marked on their first occurrence in this information with a trademark symbol (® or ™), these symbols indicate U.S. registered or common law trademarks owned by IBM at the time this information was published. Such trademarks may also be registered or common law trademarks in other countries. A current list of IBM trademarks is available on the Web at "Copyright and trademark information" at [ibm.com/legal/copytrade.shtml](http://ibm.com/legal/copytrade.shtml). Other company, product and service names may be trademarks or service marks of others. The information contained in this documentation is provided for informational purposes only. While efforts were made to verify the completeness and accuracy of the information contained in this documentation, it is provided "as is" without warranty of any kind, express or implied. In addition, this information is based on IBM's current product plans and strategy, which are subject to change by IBM without notice. IBM shall not be responsible for any damages arising out of the use of, or otherwise related to, this documentation or any other documentation. Nothing contained in this documentation is intended to, nor shall have the effect of, creating any warranties or representations from IBM (or its suppliers or licensors), or altering the terms and conditions of the applicable license agreement governing the use of IBM software. This document illustrates how one organization uses IBM products. Many factors have contributed to the results and benefits described; IBM does not guarantee comparable results elsewhere.